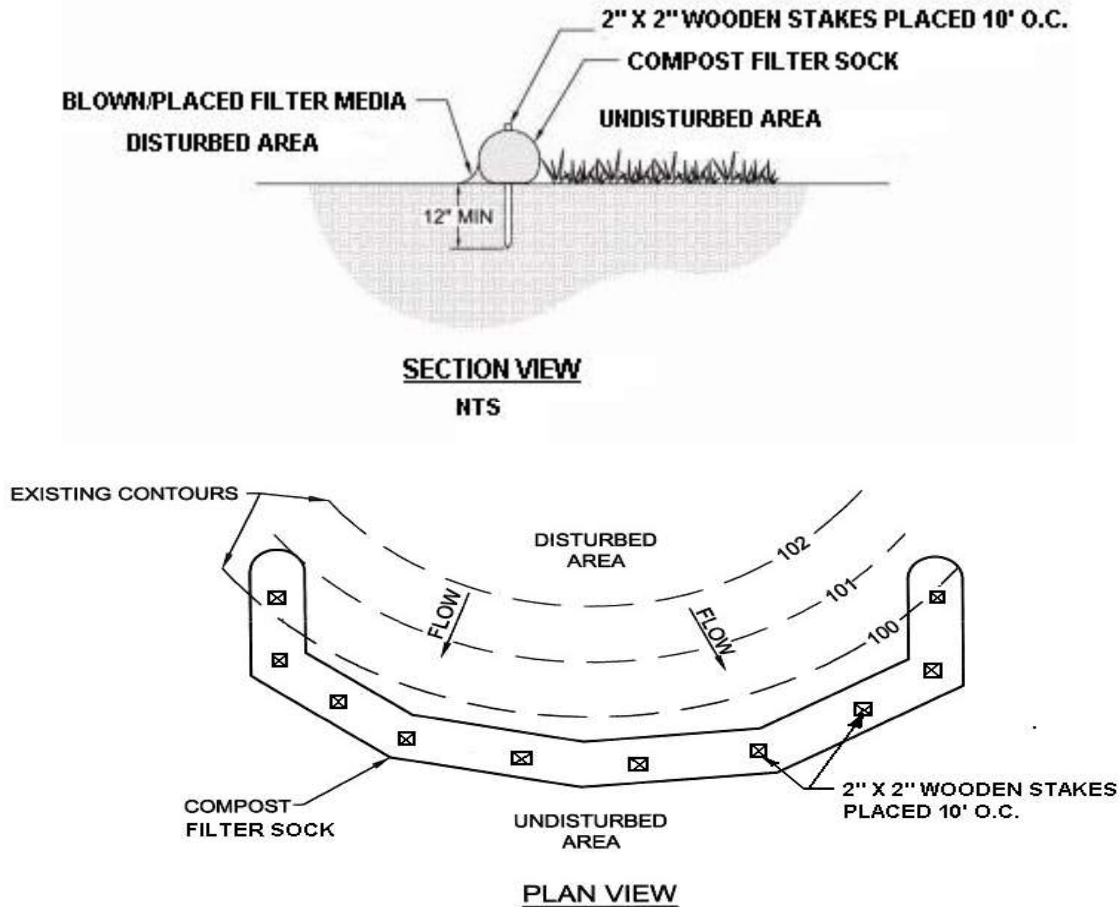


STANDARD CONSTRUCTION DETAIL 4-1

Compost Filter Sock



A Compost Filter Sock is a mesh tube filled with composted material that is placed below a disturbed area, perpendicular to sheet flow, to filter sediment-laden runoff before it leaves the site.

A Compost Filter Sock shall be placed at existing level grade. Both ends of the sock shall be extended at least 8 feet up slope at 45 degrees to the main sock alignment (see Figure 4.1 on pg. 13).

Traffic shall not be permitted to cross Compost Filter Socks.

Accumulated Sediment shall be removed when it reaches $\frac{1}{2}$ the above ground height of the sock and disposed in the manner described elsewhere in the plan.

Socks shall be inspected weekly and after each runoff event. Damaged socks shall be repaired according to manufacturer's specifications or replaced within 24 hours of inspection.

Biodegradable Compost Filter Socks shall be replaced after 6 months; photodegradable Compost Filter Socks after 1 year.

Polypropylene Compost Filter Socks shall be replaced according to manufacturer's recommendations.

Upon stabilization of the area tributary to the sock, stakes shall be removed. The sock may be left in place and vegetated or removed. In the latter case, the mesh shall be cut open and the mulch spread as a soil supplement