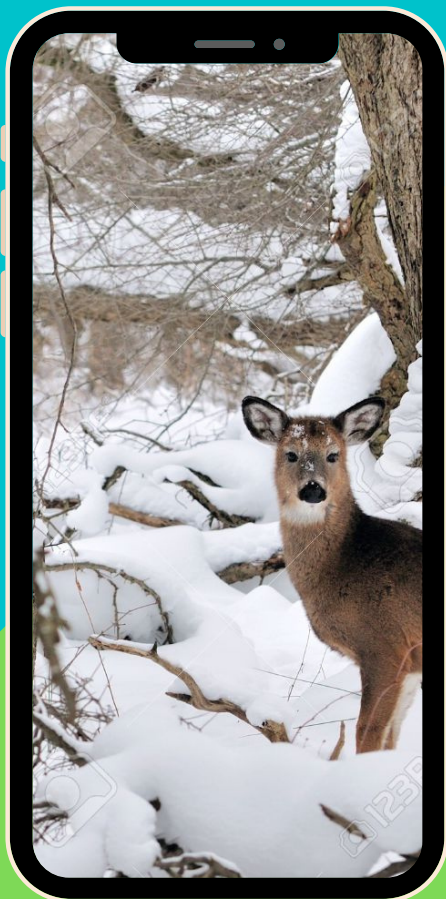




Susquehanna County Conservation District

2021

Environmental



- **YOUR CAMERA**
- **YOUR BACKYARD**
- **25 PICTURES**
- **3 TOP PRIZES**

February

1 st
through
March

31 st

Scavenger CHALLENGE

Questions? Contact cbraunns@suscondistrict.org



Dear Advisors and Students,

Each fall, the Susquehanna County Conservation District has provided county students with the opportunity to travel to Salt Springs State Park to discover and understand the natural world around us. Unfortunately, due to Covid-19 restrictions, the Conservation District had to cancel this year's in-person practice.

The Susquehanna County Conservation District values environmental education and has strived to offer an alternative Envirothon practice that allows students to explore the outdoors, expand their environmental knowledge, and compete for great prizes!

This **February 1st – March 31st**, we invite all Susquehanna County Envirothon participants to join our Envirothon Practice Scavenger Challenge.

Here's how to get started:

Items needed: Phone with camera capabilities, a student email address, access to a computer

1. Students will receive a link to a Google form created by the Susquehanna County Conservation District
2. The form contains 25 questions that relate to this years' Envirothon learning objectives
3. Each question requires students to explore online maps or explore their backyard to answer questions. All answers will be in the form of photo taken and uploaded by the student
4. Prizes will be awarded for 1st, 2nd, and 3rd place
5. A prize will also be awarded to the school with the most student participation
6. Complete contest rules are attached to this letter

Happy exploring!

Sincerely,

Courtney Braunns & Don Hibbard

2021 Envirothon Practice Challenge

Instructions:

- Submissions can be made from February 1, 2021 at 8:00 a.m. until March 31, 2021 at 11:59 p.m. on the Google Forms link provided by your teacher
- No late submissions will be considered
- This is an individual competition; team submissions will not be accepted.
- There will be prizes for the 1st, 2nd, and 3rd complete and correct submissions received. There will also be a prize for the school with the most student participation.
- You must physically take the images during the month of February. No old images or images from the internet will be accepted unless required by the question's instructions.
- Images may not be shared among students.
- No duplicate images will be accepted.
- You must submit all 25 images to be considered for prizes.
- Don't upload any images into the form until you are ready to submit the entire challenge. Google Forms will not save the uploaded images if you need to leave and come back. It will not let you advance onto the next section without uploading all images in the prior section. We suggest using the hard copy of questions on the next page as a checklist, saving the images in a file as you go, and submitting all at once.

Prizes:

1st place: Bushnell Powerview 2 Binoculars 10x50 mm

2nd place: Diamond Waterproof Hiking Backpack (student can choose color)

3rd place: LifeStraw Go Water Filter Bottle (student can choose color)

School with most participants: Each student will receive SCCD prize bag

If you have any questions, please contact Courtney at cbraunns@suscondstrict.org

Good luck and have fun!

2021 Envirothon Practice Challenge

Take this checklist into the field with you and then submit your photos to the Google Form at the link provided by your teacher

Forestry:

1. Provide an image of the tree that becomes infected by the invasive beetle, Emerald Ash Borer
2. Provide an image of a leaf in the genus: Acer (hint: first identify the tree species and then look around the understory of the tree to find the fallen leaf)
3. Provide an image of Pennsylvania's state tree (the bark of this tree was also used for production of tannic acid in the 1800's)
4. Provide an image of one of Pennsylvania's "10 important hardwoods".
5. Provide an image of one of the following invasive plants: [Autumn-olive, Bush honeysuckle, Japanese barberry, Japanese knotweed, Multiflora rose, Tree-of-heaven]

Aquatics

1. Provide an image of a plant from the family Typhaceae that is typically found in areas with slow moving water
2. Provide an image of a map from online that shows the watershed you live in
3. Provide an image of a human impact to an aquatic ecosystem
4. Provide an image of an aquatic invasive species in Susquehanna County
5. Provide an image of where you may find stoneflies, mayflies, and hellgrammites

Current Issues

1. Provide an image of a best management practice (BMP) used to control stormwater
2. Provide an image of something that could potentially contaminate groundwater
3. Provide an image of a riparian buffer
4. Provide an image of a flood control structure
5. Provide an image of an impervious surface

Wildlife

1. Provide an image of the hunting and trapping updates for the 2020-21 season from the Hunting and Trapping Digest (a screenshot of the updates from the PGC website is also acceptable)
2. Provide an image of the mammal that can be infected with Chronic Wasting Disease
3. Provide an image of the most prominent ecosystem type in Pennsylvania
4. Provide an image of an animal that the highly pathogenic H5N1 strain of Avian Influenza could infect
5. Provide an image of one of the following birds: [black-capped chickadee, northern cardinal, song sparrow, house finch]

Soils

1. Provide an image of an area where you would expect to find hydric soils
2. Provide an image of a topographic map that includes the township where you live
3. Provide an image of a decomposer (hint: during the winter, the fruiting body can be found on trees)
4. Provide an image of soil erosion
5. Provide an image of a soils map around Elk Mountain on the NRCS Web Soil Survey